

ME-US3

Installation and Connection Guide

Read This First

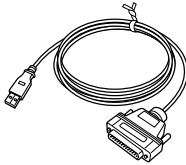
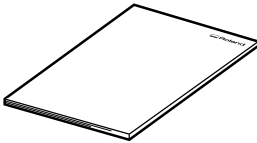
* For safety precautions related to handling the modeling/engraving machine and similar information, see the user's manual of the modeling/engraving machine.

The ME-US3 (hereafter, "this cable") is a USB to serial conversion cable for connecting the serial port on the modeling/engraving machine that you are using to a USB port on a PC. Read this document before using this cable.

When using this cable, the method for installing the Windows-based driver for the modeling/engraving machine to connect differs from that written in the user's manual of the modeling/engraving machine. Also, if the Windows-based driver for the same modeling/engraving machine is already installed, you will have to delete this installed driver.

* For details, see the explanation of how to install/uninstall the corresponding driver.

Included Items

	
<p>ME-US3 (USB to serial conversion cable)</p>	<p>Installation and Connection Guide (this document)</p>

System Requirements

Operating system (OS)	Windows 7/8.1/10 (32-bit version/64-bit version)
CPU	Minimum required CPU for the operating system
Memory	Minimum amount of required RAM for the operating system
Optical drive	CD-ROM drive
Port	USB port
Free hard-disk space required for installation	3 MB
Display	A monitor with at least 256 colors and a resolution of 800 × 600 or more is recommended.

For the latest information, see the Roland DG Corporation website (<https://www.rolanddg.com>).



1000006835

Contents

- Read This First |
- Included Items |
- System Requirements..... |
- Contents..... 1**
- Installation Procedure.....2**
 - Procedure Overview.....2
 - Installing the ME-US3 Driver2
 - Responding to an Error Message4
- Troubleshooting.....5**
 - Cutting Data Was Deleted during Cutting5

Installation Procedure

Procedure Overview

Windows-based driver for the modeling/engraving machine to connect is not installed		Windows-based driver for the modeling/engraving machine to connect is installed	
1	Installing the ME-US3 Driver (P. 2)	1	Uninstalling the Windows-based Driver (separate document)
2	Installing the Windows-based Driver (separate document)	2	Installing the ME-US3 Driver (P. 2)
		3	Installing the Windows-based Driver (separate document)

Installing the ME-US3 Driver

IMPORTANT!

At this time, do not connect the ME-US3 to the computer. If the connection is made before you install the ME-US3 driver, the driver installation will fail. Make the connection according to the instructions during driver installation.

Procedure

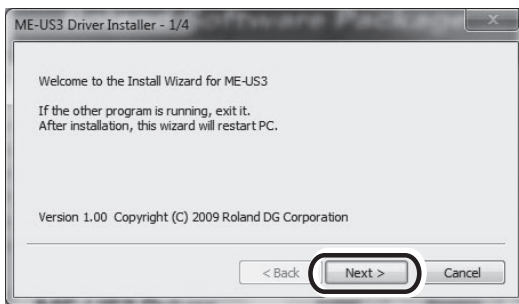
- 1 Log on to Windows as the computer's administrator (or as an "Administrators" account).
- 2 Insert the Roland Software Package CD-ROM into the disk drive (CD-ROM, DVD-RW, etc.) of the computer.
(When the automatic playback window appears, click [Run menu.exe].)
The setup menu appears automatically.
- 3 If the Windows-based driver for the modeling/engraving machine to connect is installed, uninstall it.
For the uninstallation method, see the explanation of how to uninstall the corresponding driver.
If the Windows-based driver is not installed, go to step 4.

4



Click [Install] for "ME-US3 Driver."

5

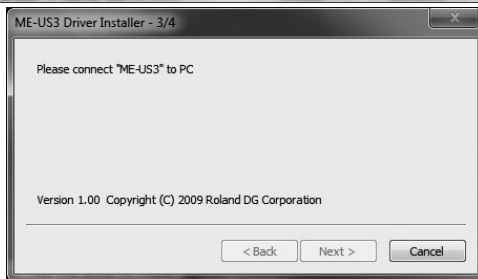


Click [Next].

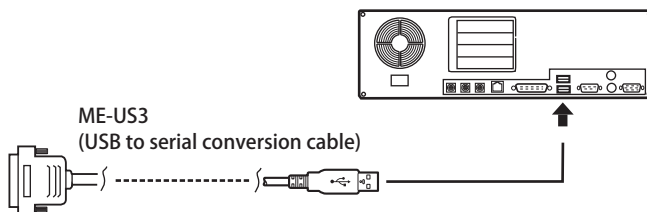
The installation begins.

If the [User Account Control] window appears, click [Yes].

6

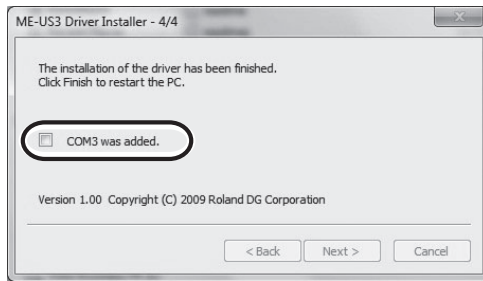


If the window shown on the left appears, connect the USB plug of this cable to the computer.



- Do not connect multiple modeling/engraving machines to the same computer.
- Do not use cables other than this cable.
- Do not use a USB hub.

7



① Select the "COMx was added." check box.

② Make a note of "COMx."

"COMx" ("x" varies depending on the computer being used) has newly been added to the printer port being used.

IMPORTANT!

Be sure to make a note of the "COMx" ("x" varies depending on the computer being used) displayed on this screen. You will have to select this port when installing the Windows-based driver.

8



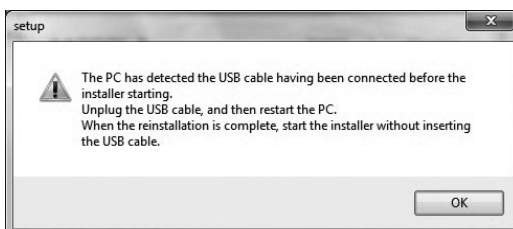
Click [Finish].

The computer is restarted automatically. (To restart later, click [Cancel].) The installation of the ME-US3 driver finishes after the computer restarts.

9

Install the Windows-based driver for the modeling/engraving machine to connect this cable to. For the installation procedure, see the explanation of how to install the corresponding driver.

Responding to an Error Message



If a message such as those shown on the left appears during installation, follow the on-screen instructions and perform the installation again.



Troubleshooting

Cutting Data Was Deleted during Cutting

Has the Z (depth direction) movement speed been set to 1 mm/s (0.04 in./s) or less?

Was cutting paused for 30 minutes or more?

With either of the usage methods listed above, the cutting data may be deleted during cutting. Change the computer settings.

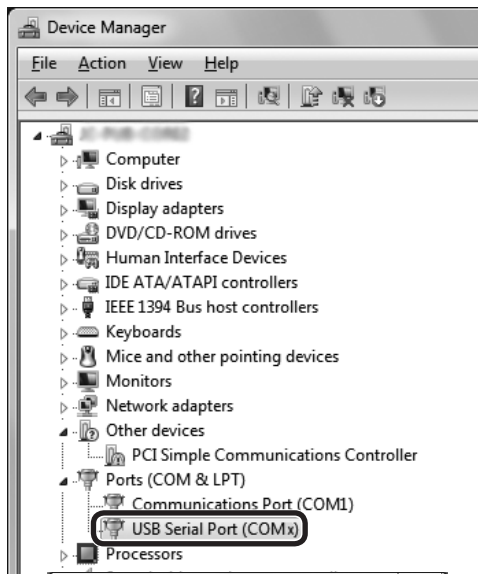
Procedure

1 ① In the Start menu search box, enter "Device Manager."

2 ② Click [Device Manager].

The [Device Manager] window appears.

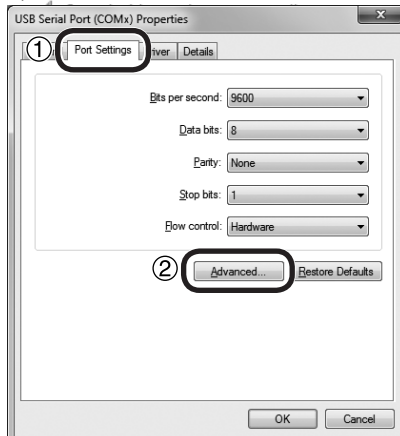
2



Under [Ports (COM & LPT)], double-click [USB Serial Port (COMx)].

[COMx] is the same as the note that you made in step 7 on page 4.

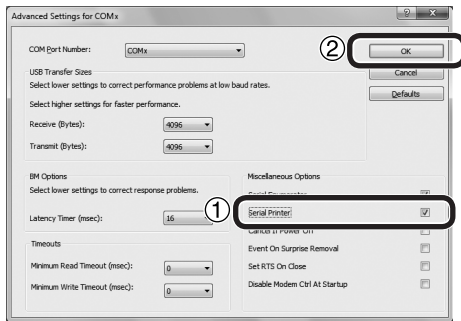
3



① Click the [Port Settings] tab.

② Click [Advanced].

4



1 Select the [Serial Printer] check box under [Miscellaneous Options].

2 Click [OK].

5 Close the [Device Manager] window.

This completes the changes to the computer settings.