

# SU201

## USB over Network Server

---

### 【QuickGuide】

- ◆ Support One USB1.1/2.0 Port USB Device
- ◆ Support 10/100Mbps Auto-Sensing Fast Ethernet

# 1 Packing List:

- ⌘ One SU201 USB over Network Server.
- ⌘ One external AC power adapter (output 5V/2A DC).
- ⌘ One Setup CD includes driver utility and user manual (for Windows 2000/XP/Vista only).
- ⌘ One Quick Guide (this one).

## 2 Before installation

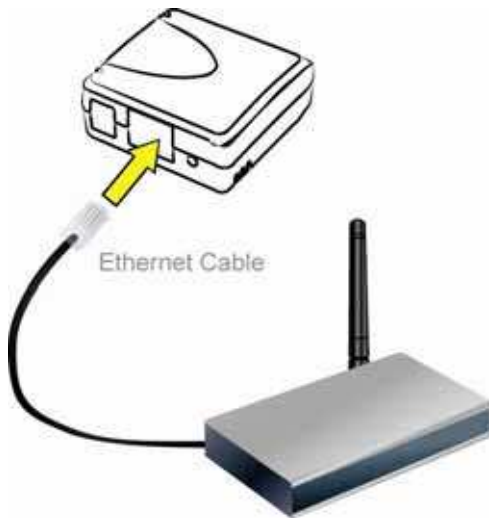
- 2.1 Check the integrity of the packing list.
- 2.2 Please note that some proprietary USB devices does not support, please check the USB device's specification first.
- 2.3 Please follow the USB device's User Manual to set up the device, make sure that it's function works well.
- 2.4 Confirm that the IP address of your PC must be within the same subnet as USB over Network Server, or you can not go on setting. Default IP setting of USB over Network Server is **DHCP Client**, it will get IP address from your DHCP Server automatically, if there is no DHCP Server on your LAN, USB over Network Server will change its IP address into 169.254.0.10.
- 2.5 SU201 USB over Network Server is for Windows 2000/XP/Vista Operating System only.
- 2.6 We do not recommend to use USB over Network Server on wireless LAN network.

## 3 USB over Network Server installation:

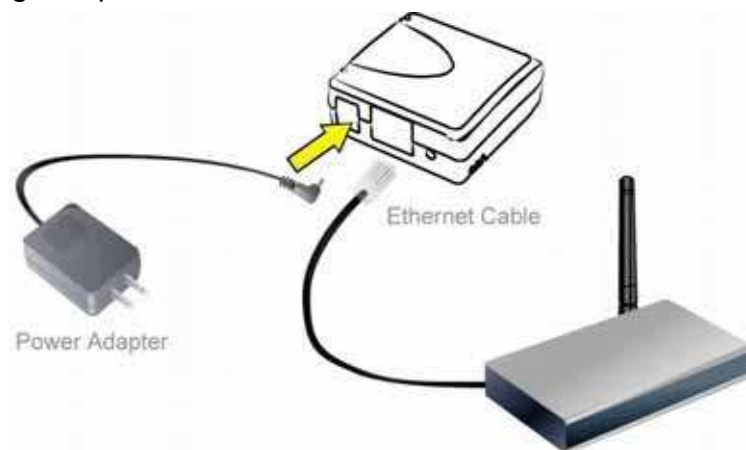
- 3.1 Before you start, you should prepare one Windows 2000/XP/Vista computer with CD-ROM drive and One USB devices with USB port.
- 3.2 Make sure that your USB devices are switched off and that the Network USB over Network Server's power adapter is disconnected.
- 3.3 Connect your USB device to the USB port of the Network USB over Network Server.



3.4 Connect the Network USB over Network Server to the router or switch/HUB with the Ethernet cable.



3.5 Connect the power adapter to the Network USB over Network Server. When the Link LED lights up, the Network USB over Network Server is correctly connected to the network.



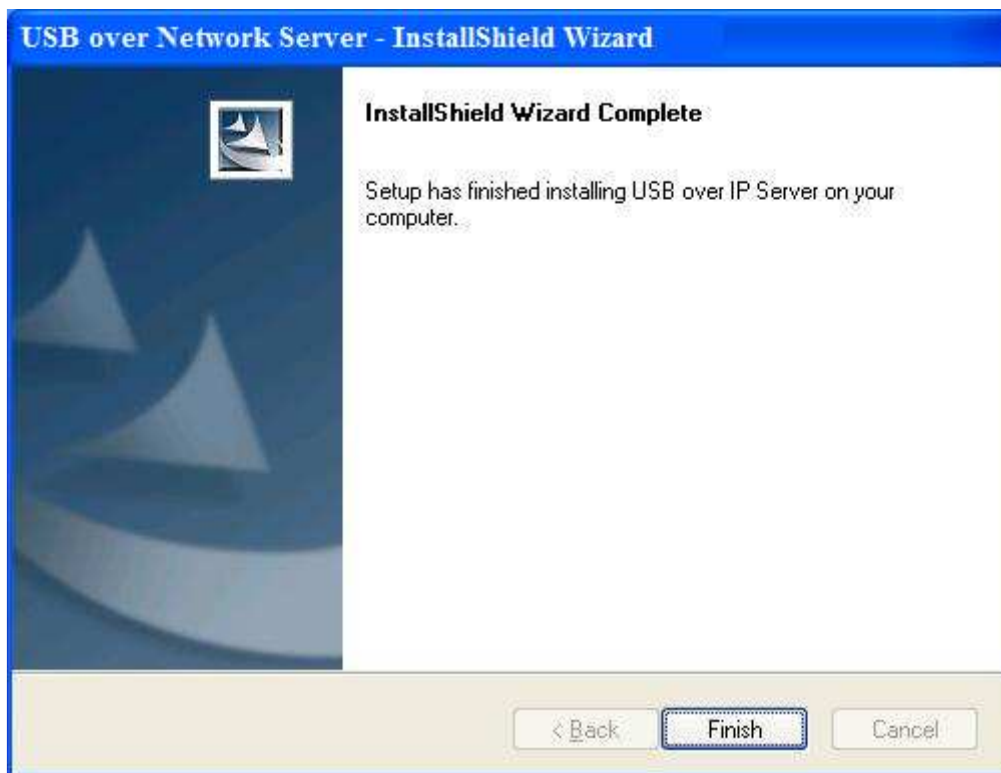
## 4 Software Installation:

4.1 Insert the setup CD into your computer. A welcome screen should appear with a menu of options, including the option to install the proper Network USB over Network Server software, access the User Manual, or Exit out of the welcome menu.

4.2 The installation wizard will start the installation process; click “**OK**” to continue.



4.3 When the installation completed, click “**Finish**” to close the installation wizard.



4.4 On your desktop you will see a new icon, double-click the icon and it will bring up the Network USB over Network Server setup utility.



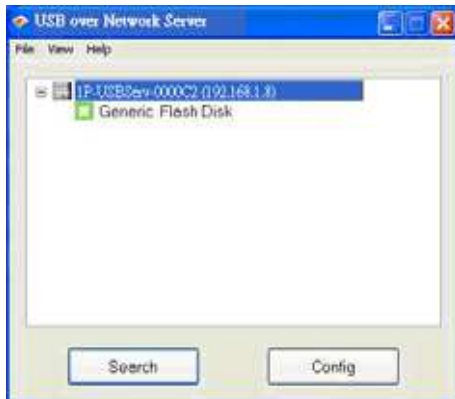
- 4.5 The setup utility will show up and display all the active Network USB over Network Servers on your network. In this screen, you will see the product listed as “**1P-USBServ-0000C2(192.168.1.8)**”. The “0000C2” is the last 6 digits of the Network USB over Network Server’s MAC address, and the “192.168.1.8” is the Network USB over Network Server’s IP address.



#### 4.6 Connecting to an USB Device.

Connect the USB cable on your USB device to the USB port of the Network USB over Network Server, and make sure both the USB device and the Network USB over Network Server are powered on. The USB device will then show up on the Network USB over

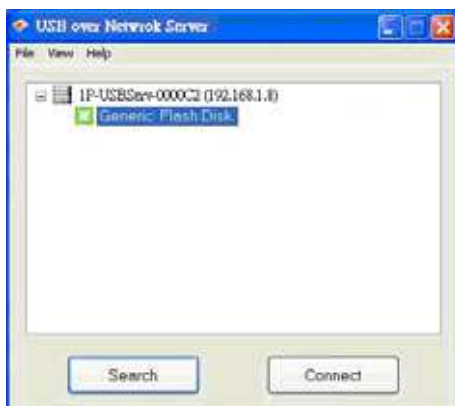
Network Server utility as a green icon. The green icon indicates that the USB device is ready to be connected. If for any reason the USB device does not show up, please click the **“Search”** button to refresh the list.



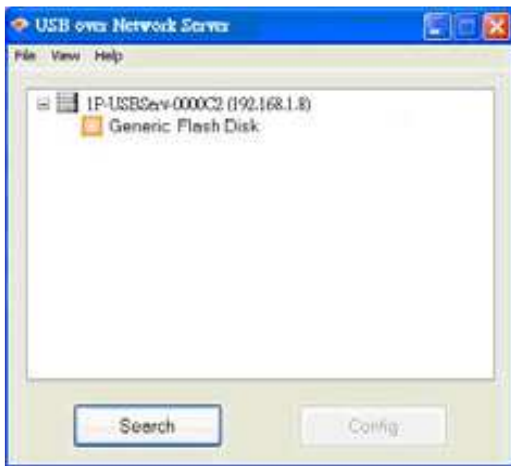
**Note:**

If your USB device does not show up on the list, please try to disconnect and reconnect the USB device to the USB port of the Network USB over IP Server. Also, please make sure the Network USB over IP Server and your USB device are powered on.

4.7 Select the USB device that you will want to connect and click on the **“Connect”** button at the bottom.



4.8 Once the USB device has been connected, the green icon(■) will turn orange(■) to indicate that the connection has been established. The USB device now becomes available on your computer, and you can use this USB device as if it was directly connected to your computer.

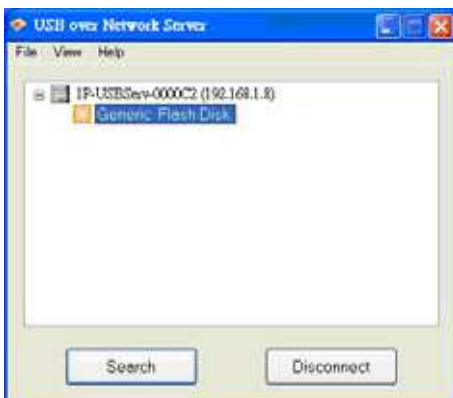


4.9 The USB device will be detected as if it was plugged directly into your computer.

4.10 If this USB device is connected to your computer for the first time, then you will need to complete the setup wizard for the USB device software and driver installation. Please follow the wizard to setup the USB device. Make sure you have the correct CD or drivers for your USB device and follow the on-screen steps in the wizard. Once the wizard is completed, you will be able to use the printer as if it was directly connected to your computer.

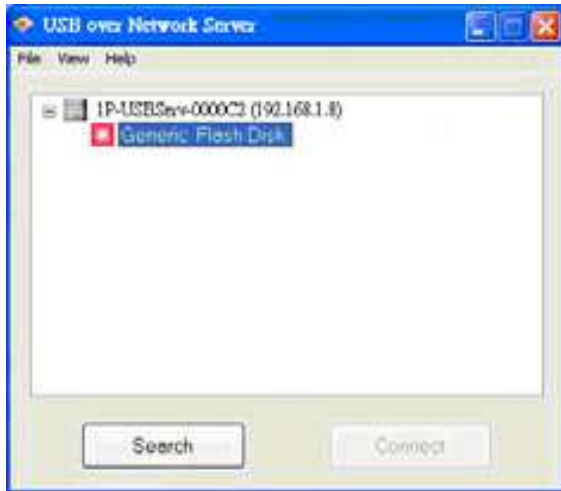
#### 4.11 **Disconnecting an USB Device.**

To disconnect an USB device, simply click on the connected USB device on the list of the Network USB over IP Server setup utility, and press the “Disconnect” button. The device will then no longer stay connected to your computer, however, you may reconnect the USB device again once the icon becomes green(■).



#### 4.12 **Request to Disconnect.**

If the USB device is being used by another computer on your network, a red icon(■) will be displayed in front of the USB device name. You will not have the option to disconnect the USB device; however, you may send a courteous message to request that the other user disconnect/release the USB device.



4.13 To send the courteous message, right-click on the USB device and select “Request Disconnect”. A message will then be sent to the user requesting that they disconnect from the USB device.



The chart list below shows what each colored icon means in the configuration software.

	USB device is available and ready to be connected.
	The device is not connected but has some type of problem such as out of ink.
	USB device has been established and is now connected.
	Error with USB device. Example: out of paper.
	USB device is in use by another user.
	Problem with a USB device occupied by another user.
	Unsupported USB device.
	USB server is on a different network segment. USB device can not be connected.



- 4.14 The polling interval will allow the setup utility to pull information from your network to find out the status of all connected Network USB over Network Server and USB devices. To configure the polling interval, in the utility, click on **File -> Settings -> Polling Interval**.

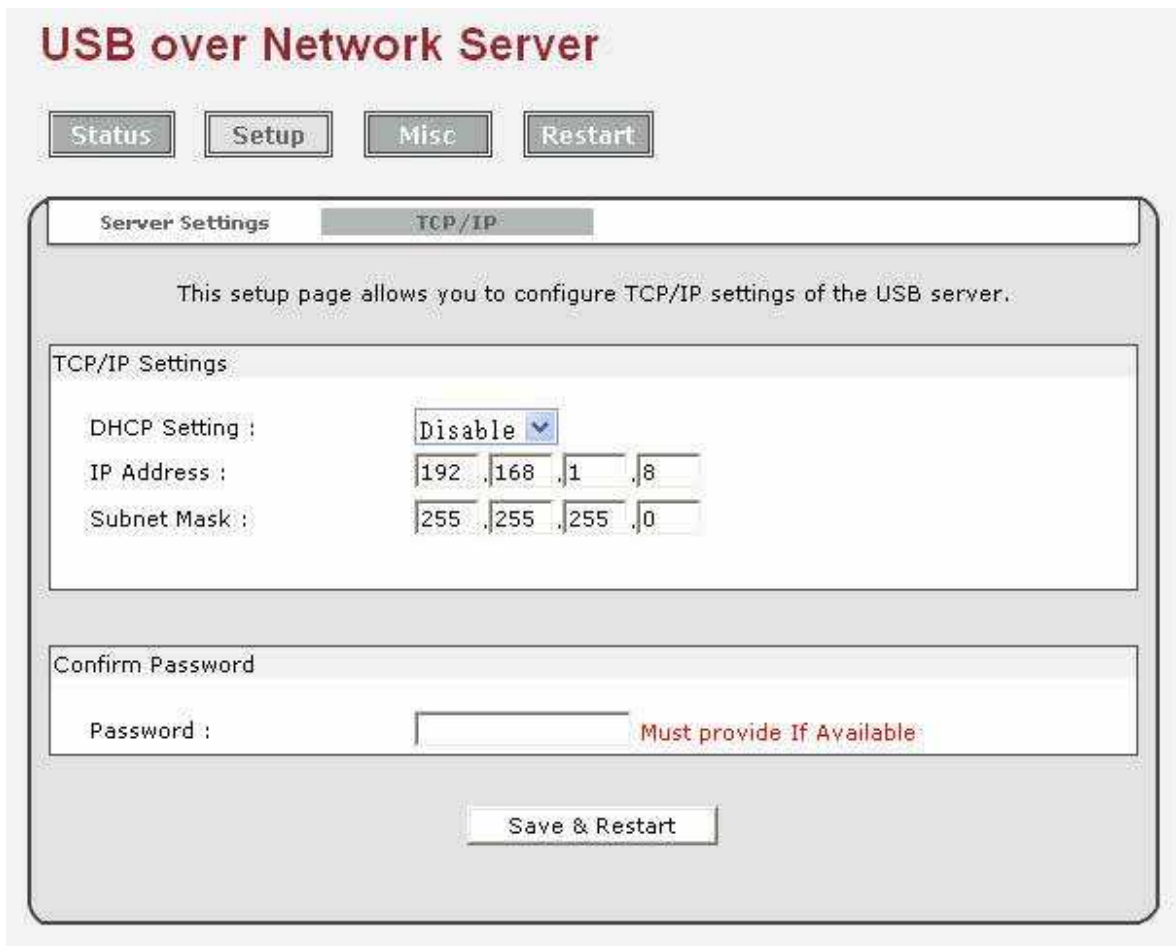


- 4.15 You may set a number in the **“Seconds”** box. Click on **“Submit”** to allow the new interval setting to take effect. Once you have set a number, the utility will automatically update any changes made to server in the main dialog box.



# 5 TCP/IP Settings

5.1 You can change the network settings according to your network specification. If you would like to give the Network USB over Network a static IP address, you will need to **Disable** DHCP in the “**TCP/IP Settings**” menu”. Once DHCP is disabled, enter the desired IP address on the IP address field along with the subnet mask and click “**Save & Restart**” button to reboot the Network USB over Network Server.



5.2 Please note that if the Network USB over Network Server has a set password, you will need to enter it into the password field box.